

DEADWOOD DITTO

FEBRUARY 2025



Third Saturday dinner and dance, Deadwood Community Center	February 15th, Saturday	Potluck Dinner 6:30, Music 7:30
Swisshome/Deadwood Fire Dept Board mtg	February 13th, Thursday at 7 pm, Swisshome station (next to the Post Office)	Contact Mona Arbuckle @sd.rfpd.@gmail.com
Mapleton Food Share- contact 541-268-2715 or 541-268-2919	February 13th, Thursday and February 22nd, Saturday	10am-2pm
Triangle Lake Food Box- contact Cyndie Blake 541-925-3254	February 14th, Friday	10am-2pm
Siuslaw Watershed Council Native Plant Distribution	February 15th, Saturday Watershed Council Office in Mapleton	10am-12pm Please see SWC Newsletter for details www.siuslaw.org
Deadwood Ditto deadwoodditto@yahoo.com	Submissions due the 26th of the month, with distribution very close to the first of the next month	Editor Jan Kinney kinneyjan1@gmail.com
Deadwood Food Coop	Every other month Info available on Deadwood Trading Post under Food Coop tab	Yvonne Pappagallo contact yvonnppappy@gmail.com

Ditto Correction: The January rendition of the New Curmudgeon is being reprinted in the February issue because it got scrambled due to a formatting error. The February one will be printed below it. Apologies and always learning. *Jan Kinney (Deadwood Ditto Editor)*

The New Curmudgeon (January 25)

The Nature of Truth

If you feed the crocodile enough, it may be a guarantee that it will eat you last.

"In this world of lies, truth is forced to fly like a scared white doe in the woodlands, and only by cunning glimpses will she reveal herself as in Shakespeare and other masters of the *great art of telling the truth- even though it be covertly and by snatches*" *Herman Melville* . "Tell all the truth but tell it slant" *Emily Dickinson*. Originality frequently arises from the creative combinatorial process of re-configuring fragments of thought and images, not so much what is presented, but how. Galileo's recant serves to solidify in concrete the stranglehold of the church on scientific endeavor of the time. The "truth of nature" stood against their "truth of God" and force was put into play, as it always will be, to protect the weak-minded against the strong. This paradigm looms large on our present horizon. Have we really not progressed beyond this dark ages concept of continually using force to promote a false conclusion? Under the aegis of the church, science cannot flourish. The wild contemplation of philosophy and art with the parity of mathematics couples truth and beauty yet truth can confer both beauty and tragedy. Truth may show itself only after the long reach of time pulls back the cloak of convention to allow a view uncluttered by the rubble of dogma that has masked its brilliance.

When Galileo first observed the phases of Venus as it passed behind the sun and reappeared, it presented the irreconcilable contradiction between the Ptolemaic model and the cosmic reality, eventuating us from the center of the universe. Yet criticism is necessary to expose the want of progress which, without the beam of intellect, would never discern what is assumed from what is. Galileo was critical of the religious dogma and paid dearly for it. You are always putting yourself at some risk to question an accepted "truth"...to peer beyond the veil of accepted reality, to embrace that there is no "one way", no one view that will disabuse. Poets, prophets and reformers will always step up to challenge the tenets of philosophers past and present with a new future. As "failure is the sinew that connects success" so failure is the scaffold upon which success is built. The life of the mind is seriously threatened by the current power structure and must be deliberately addressed and cultivated in order to survive. In a thralldom there will inevitably be collisions between the ideal and the real that will limit the horizons of possibility...the space between the possible and the permissible. We need to transcend this crippling occurrence by refocusing our attention beyond the reach of its power over us. It should only serve to strengthen our resolve for our own spiritual and mental enrichment. We are shackled by language as a necessary prosthetic but language can be a cultural progenitor. "Be joyful though you have considered all the facts." *Wendell Berry*. "This is precisely the time when artists go to work. There is no time or place for despair, self pity, silence or fear. We speak, we write, we do language. That is how civilizations heal." *Toni Morrison* "We have art so we shall not die of reality." *Friedrich Nietzsche* We prop ourselves up with accomplices and often they offer approbations; another's assent is like a second conscience. We are about to see the aperture of possibility constricted to a pinhole. However the pinhole camera obscura was perfected by Alhazen in @1000ad enabling him to view a solar eclipse, this about 800 years before photography of any kind. Therefore a pinhole is not a total denial and has an obvious workaround. It works like = what you think about, you bring about. Illumination has a

variety of meanings...Archimedes illuminated physical reality through mathematics. Descartes married Euclidean geometry with algebraic equation to introduce the mathematical poetry of the real world. Cosmogony is any theoretical explanation for the origin and existence of the universe from the "big bang" to the myths and stories of various cultures. The beginning of the world is simultaneously the beginning of the human condition and it is impossible to speak of this as if it were simple. Any cosmogony is inseparable from the present cultural condition representing it in ritual experience. "Dey say it don't be de way it is...but it do." It is from speculation of the dominant features of manifold myths of creation that theosophical and philosophical theories have been developed. In the single deity model it is the deity who determines the preservation, maintenance and end of the world. In many versions there is a cyclic period in which the world returns to its original chaos to rise again out of this initial state. Our new year ritual imitates the mythic structure of the first beginning. The otherness and difference between creator and creature becomes a source of theological discussion and philosophical speculations. The a priori nature of the single creator creates a dualism between the creator and the world and creatures thus a mediator of sorts provides an option. Ontology is the philosophical study of being. Being encompasses all of reality and every entity within it. We expect that the presence of everything or anything always has a cause because of our experience of the necessity of causes. The formation of the universe is outside our experience and may be subject to different rules. Without essential premises, explanation is not possible. "Nothing comes from nothing" ...probably from *Parmenides*, often referred to as the father of ontology, prescribes two views of reality = 1. the way of truth, describes how all reality is one 2. the way of opinion...describes the world of appearances in which one's sensory faculties lead to false conceptions. Ontology leads to the principle of sufficient reason. Natural theology is the term used to cover the "cosmological argument", where reason and observation alone are the premises and precluding revelation, making it a category of its own. A cosmological argument can also be referred to as the "causal argument" or first cause, as the concept of causation is the principal underpinning idea. There was once a Society for the Diffusion of Useful Knowledge in London in the early 19th century but fizzled out by about 1840. It was focused on providing written educational material to the poorer class but was abandoned after some public criticism of the actual usefulness of its material. What would we call useful knowledge topically...an integration and cross pollination of information effecting integrated wisdom greater than the sum total of bits of fact. Avoiding the technical punctilio present in any study of this kind would require that any contribution along these lines would necessitate some expertise. Most folks have placed themselves beyond the needs of basic survival, which may put them at some disadvantage. When things go out, it may not be possible to rely on everyday convenience. Gasoline does not store well...diesel does...this will be the motive fuel of survival. The unconsciousness with which we are proceeding into the future, open mouthed and awestruck by technological advances, is absolutely appalling. Suffering promotes connection between people and the engine of all creative energy is connection...draw your own conclusion. We want to leave a lasting mark of betterment on an imperfect world. Policy change and cultural change are hardly the same thing and exist on separate time scales. "Sometimes you have to be your worst to do your best" D.D. Eisenhower. I'll close with a commonly used adage in the military ... "Salvage everything but the bulletholes".

Submitted by James Webb

The New Curmudgeon (February 25)

Belief in, Belief that...

Belief turned out to be an exhaustingly complex concept with a bewildering array of variations too numerous to cover in anything less than an entire tv series. What do you suppose could be the origin of belief, lacking artifactual evidence and only our imagination to delve into how the human mind developed beyond the reach of record. Ancient man confronted the environment with awe and belief involved acceptance of nature in a way we can scarcely imagine. And yet they must have believed those constructs as avidly as we believe the ones we confront today. Doubt is the ground for all belief and society itself is what bestows significance upon beliefs. An individual's beliefs are drawn from the collaborative imagination of society and infused with subjective emotional investment. To believe is to make a commitment to a set of symbols that assuage doubt, allowing a passionate commitment to a way of experiencing the world. Since any given set of beliefs becomes real to anyone who shares them thus all religions are true in their own fashion. Belief in having attained the truth is an affirmation of the solace of explanation. This emotional motivation behind explanation serves to dispel doubt's anxiety since belief aims to benefit the believer. As the "age of enlightenment" offered opinion to replace dogma, so the fervor of religion is bled off by professional sports, social justice and now media and celebrity worship (to mention only a few). Belief is an option, a choice between sets of theories and constructs of reality. The power of society is the very condition of civilization. There appears to be no unassailable truth about human nature. Do you believe that the top pole of aaaa battery is the positive anode? - In fact it is not. The inner chemistry of the battery has the cathode (neg) attached to the top and the anode to the bottom. So much for that belief. Ben Franklin thought the flow of current originated at the anode and this belief became pervasive. The electron hadn't even been discovered at that point but this is accepted now as "convention". The flow of electrons originates at the cathode where a surplus of electrons accumulates and are attracted by the anode. Since convention has dictated this false belief, it must mean that all batteries are mislabeled. How does one validate a belief in an arena of false media and deliberate deception? In the rapidly changing context of today's socio/political scene, it's no wonder for the confusion. As histories are basically political narratives there will always be ambiguity, yet across the breach of time and selective erasure we call history, class has endured as the most divisive factor in society. We think self real and suffer accordingly, unable to fully grasp the idea of the all. Yes, loss is an elemental experience of every life. We are not impervious to the ceaseless forces of decay that drive the universe. Indeed, our psychology is vulnerable to the shock of our mortality. Taking care of something is an important part of taking care of yourself. There is no alternative to persevering and that does not require you to feel good. Resentment arises when we are in pain but believe that we are entitled to not feel the pain. Communities evolve by discussing matters that lurk at the edge of the respectable. Philosophy's value lies not upon any convergence on truth. In fact this narrow view ignores exactly what gives philosophy its distinctive value...that of being able to explore topics where our epistemic tools reveal their limitations, to contemplate the most general and important questions that lie beyond our full grasp. Philosophy lives in that area of darkness just outside the circle of light. A consultation with Saphrosyne is not always available. This woven garment that is our collective lives is stained and torn but it is still being woven. We are encountering an appeal to self reliance. We must use this period of uncertainty as a springboard toward transformation...to leap courageously into an intellectual future. Inaction is cowardice, there can be no scholar without the heroic mind. Life is always the best teacher. It is the school in which we all get taught. To make the most of it we must use what we have learned. The goal of successful teaching is, after all, to convert life into truth. Thinking is a partial act. Thinking is the function....living is the functionary. Only by speaking the truth is the universe made safe and habitable. Words transform both speaker and hearer. They feed energy, emotion and understanding back and forth and amplify it to transmute mere information into illumination.

Submitted by James Webb

The longer I live, the more deeply I learn that love-whether we call it friendship or family or romance- is the work of mirroring and magnifying each other's light. Gentle work. Steadfast work. Life-saving work in those moments when life and shame and sorrow occlude our own light from our view, but there is still a clear-eyed loving person to beam it back. In our best moments, we are that person for another. "*James Baldwin*" *Submitted by Michelle Holman*



"The real problem of humanity is the following: We have paleolithic emotions; medieval institutions; and god-like technology." *E O Wilson*

"You never change things by fighting the existing reality. To change something build a new model that makes the existing model obsolete." *Buckminster Fuller*

And so, to quote Vladimir Lenin, what must be done?

"We must invest our energy in building parallel, popular institutions to protect ourselves and to pit power against power. These parallel institutions, including unions, community development organizations, local currencies, alternative political parties and food cooperatives, will have to be constructed town by town. The elites in a time of distress will retreat to their gated compounds and leave us to fend for ourselves."

Submitted by Richie Gross



Tears, idle tears
I know not what they mean.
Do they not water the lonesome field
I have laid (my eyes) upon?
Or do they feed (bit by bit)
That giant gentle ocean?
(See) if the fishes breathe life
Out of what we weep,
Than
Even stumbling is forward motion.
After (what they've dropped)
There is something we keep.
Fears, idle fears
I know not what they mean.
Sometimes I feel it in my heart
What I know in my guts

[Apart from an overly suspicious spleen]
There's nothing to do but stall
In a place of ifs, ands and buts.
Ten foot tall
Shadows cast by inchworms.
Life doesn't frighten me at all
After i remember it's so simple:
Bravery is not forgetting that
Faith is stored under the left nipple.
Submitted by Justice Johnson

Third Saturday

Come out for February's Third Saturday Dinner and Dance. Community dinner at 6:30, music at 7:30. This month we welcome back to Deadwood.... Satori Bob! Based in Eugene, Oregon, John Baumann, the creative force behind Satori Bob, leads an ensemble of dedicated performers as they redefine the familiar Americana genre. Through complex lyrical stories, countless live performances, and a commitment to space and interaction within the music, Satori Bob strives to remind you of the past while rewriting what it means to be an Americana band.

Submitted by Kate Harnedy

Deadwood Creek Services Board Updates

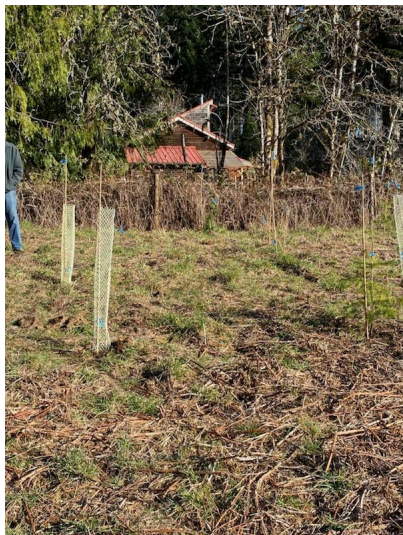
January 2025

Thanks to all of those who came out to the Annual Meeting and a **huge thank you to all of those who have volunteered to support the Community Center over the past year!** We are so excited about moving into 2025 with a focus on our beautiful community and how we're able to support and build each other up!

As submissions for the Ditto are needed before the Annual Meeting, we'll send out notes and action items to our email list and have all the details in the Ditto in March.

Please stop by the Center and look over the fence near the Creek to see the incredible work of the Siuslaw Watershed Council with clearing and replanting native plants on the land which will be conveyed to the Community Center by Leonora Kent... We are raising funds specifically for this purpose - please donate at www.deadwoodcreekservices.com and note "Creek Access" to contribute to this cause!

Submitted by Courtney Stone Photos courtesy of Leonora Kent





Notice of Regular Board Meeting

The Swisshome Deadwood Rural Fire Protection District Board of Directors will hold their regular meeting 7:00 PM on Thursday, February 13th, 2025 at the Swisshome fire station (12) - 13283 OR-36, Swisshome, OR 97480.

The meeting agenda will include:

APPROVAL OF MINUTES and BILLS:

PUBLIC COMMENT:

OLD BUSINESS:

Board-to-Board meetings
Medical Director
QRT
Station 13

NEW BUSINESS:

CORRESPONDENCE:

FIRE CHIEF REPORT:

SAFETY MTG

Surplus items

Submitted by Mona Arbuckle



Support Mapleton Youth After-school Sports

With Your \$.10 Bottle Drop Returns

Two Ways to Donate:

Get Green Return Bags and stickers from Lou Burruss by calling 541-964-3981 or emailing at lburruss@Mapleton.K12.OR.US

OR

Go to your account at BottleDropCenters.com and donate your balance to Mapleton S.D. Youth Sports.

Submitted by Kaki Burruss

FEBRUARY

SUNDAY	MONDAY	TUESDAY	WEDNESDAY	THURSDAY	FRIDAY	SATURDAY
						1 8-5: HOME MS B Team Tourney Boys & Girls 6pm - Boys Bball vs. Alsea
2	3 4pm: Home MS Bball vs. TLake	4 6:30pm: HS Boys Bball @ Alsea	5 4pm: MS Bball @ McKenzie	6 2pm-6pm Sforza Fair Exhibition of Learning 530pm: Senior Night HS Bball vs TLake	7 District PD Day: NO FRIDAY OR ELEMENTARY SCHOOL PROGRAM	8 8am-4pm: HOME MS BOYS A TEAM Tournament
9 Lion's Club Breakfast	10 4pm: Home MS Bball vs. Eddyville 530: HS Bball @ Powers	11 530pm: HS Bball @ Crow	12	13 530pm: HS Bball @ McKenzie	14 FRIDAY & ELEMENTARY SCHOOL PROGRAM HS Dance 8-11pm	15 8am-4pm: HOME MS GIRLS A TEAM Tournament
16	17 NO SCHOOL - President's Day	18	19 6pm: Board Meeting	20	21 FRIDAY & ELEMENTARY SCHOOL PROGRAM	22 8am-5pm: Mountain West Region Playoffs HS Bball @ Junction City
23	24	25	26	27 5-730pm: Literacy Night (Title)	28 FRIDAY & ELEMENTARY SCHOOL PROGRAM	